



# OWNER/OPERATOR'S MANUAL & ILLUSTRATED PARTS LIST

---

**MODEL:**

**73-70642    POWER BLOWER    PB100**



*WARNING: If incorrectly used this machine can cause severe injury. Those who use and maintain this machine should be trained in its proper use, warned of its dangers and should read the entire manual before attempting to set up, operate, adjust or service the machine.*

---



**09-236A REV B**

**CALIFORNIA  
Proposition 65 Warning**

Diesel engine exhaust and some of its constituents are known to the State of California to cause cancer, birth defects and other reproductive harm.

 **WARNING**

The engine exhaust from this product contains chemicals known to the State of California to cause cancer, birth defects or other reproductive harm.

**Californie Proposition 65  
Avertissement**

Les échappements des moteurs diesel et certains de leurs composés sont reconnus par l'Etat de Californie pour être cancérigènes, provoquer des défauts congénitaux et d'autres dangers en matière de reproduction.

 **AVERTISSEMENT**

L'émission du moteur de ce matériel contient des produits chimiques que l'Etat de Californie considère être cancérigènes, provoquer des défauts congénitaux et d'autres dangers en matière de reproduction.

**California Advertencia  
de la Proposicion 65**

El estado de California hace saber que los gases de escape de los motores diesel y algunos de sus componentes producen cáncer, defectos de nacimiento y otros daños en el proceso de reproducción humana.

 **ADVERTENCIA**

El estado de California hace saber que los gases de escape de este producto contienen productos químicos que producen cáncer, defectos de nacimiento y otros daños en el proceso de reproducción humana.

# POWER BLOWER

---

---

---

## IMPORTANT MESSAGE

Thank you for purchasing this Jacobsen product. You have purchased a world class product, one of the best designed and built anywhere.

This product comes with an Owner/Operator's Manual. The useful life and good service you receive from this product depends to a large extent on how well you read and understand this manual. Treat this product properly and adjust it as instructed, and it will give you many years of reliable service.

See a Jacobsen dealer for any service or parts needed. Jacobsen service ensures that you continue to receive the best results possible from Jacobsen products. You can trust Jacobsen replacement parts because they are manufactured with the same high precision and quality as the original parts.

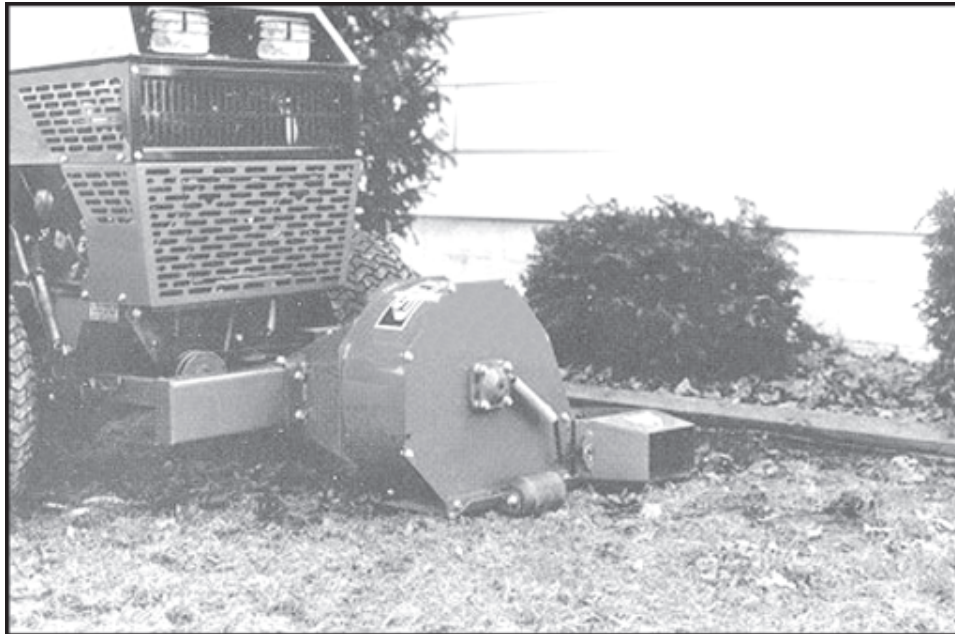
Jacobsen designs and builds its equipment to serve many years in a safe and productive manner. For longest life, use this product only as directed in the manual, keep it in good repair and follow safety warnings and instructions. You'll always be glad you did.

**Jacobsen, a Textron Company**  
**One Bob Cat Lane**  
**Johnson Creek, WI 53038-0469**

<b>TABLE OF CONTENTS</b>	<b>FIGURES</b>	<b>PAGE</b>
INTRODUCTION/SPECIFICATIONS .....		2
SAFETY .....		3, 4
OPERATION .....		5
ASSEMBLY .....		6
PARTS SECTION .....		7
POWER BLOWER PARTS .....	FIGURE 1 .....	8, 9
DISCHARGE CHUTE .....	FIGURE 2 .....	10, 11

## DESCRIPTION

Use the Power Blower to clear leaves and the most stubborn debris from lawns, parking lots, driveways or golfcart paths quickly and easily. The airflow is equal to a 150 MPH wind. It will also blow away water laying on paths and golf greens. The blower incorporates an 8 blade fan with speed governed by the power unit pto. The discharge chute may be flipped up or down to direct airflow.



## SPECIFICATIONS

Weight .....	95 lbs.
Overall width .....	33"
Overall height.....	18"
Overall length.....	24"
Skid shoe .....	Fixed
Fan .....	8 blade
Fan diameter .....	14"
Fan width .....	6"
Fan speed .....	4300 rpm @ 3600 rpm engine speed
Ground clearance in raised position.....	4-1/2"

## NOTICE !!!

Unauthorized modifications may present **extreme** safety hazards to operators and bystanders and could also result in product damage.

Jacobsen, a Textron Company strongly warns against, rejects and disclaims any modifications, add-on accessories or product alterations that are not designed, developed, tested and approved by Jacobsen Engineering Department. Any Jacobsen product that is altered, modified or changed in any manner not specifically authorized after original manufacture—including the addition of “after-market” accessories or component parts not specifically approved by Jacobsen—will result in the Jacobsen Warranty being voided.

Any and all liability for personal injury and/or property damage caused by any unauthorized modifications, add-on accessories or products not approved by Jacobsen will be considered the responsibility of the individual(s) or company designing and/or making such changes. Jacobsen will vigorously pursue full indemnification and costs from any party responsible for such unauthorized post-manufacture modifications and/or accessories should personal injury and/or property damage result.



This symbol means:  
**ATTENTION!**  
**BECOME ALERT!**

Your safety and the safety of others is involved.

## Signal word definitions:

The signal words below are used to identify levels of hazard seriousness. These words appear in this manual and on the safety labels attached to Jacobsen machines. For your safety and the safety of others, read and follow the information given with these signal words and/or the symbol shown above.

### **DANGER**

**DANGER** indicates an imminently hazardous situation which, if not avoided, **WILL** result in death or serious injury.

### **WARNING**

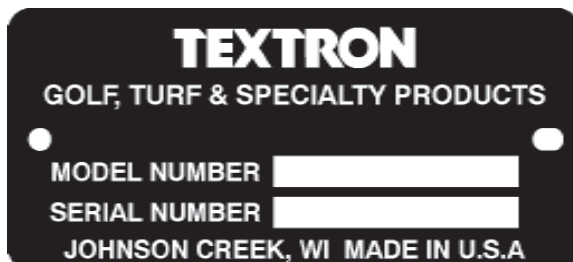
**WARNING** indicates a potentially hazardous situation which, if not avoided, **COULD** result in death or serious injury.

### **CAUTION**

**CAUTION** indicates a potentially hazardous situation which, if not avoided, **MAY** result in minor or moderate injury. It may also be used to alert against unsafe practices or property damage.

### **CAUTION**

**CAUTION** used without the safety alert symbol indicates a potentially hazardous situation which, if not avoided, **MAY** result in property damage



**MODEL NUMBER:** This number appears on sales literature, technical manuals and price lists.

**SERIAL NUMBER:** This number appears only on your mower. It contains the model number followed consecutively by the serial number. Use this number when ordering parts or seeking warranty information.

## GENERAL SAFETY

1. Read and understand the Owner's Manual before attempting to operate this machine.
2. Operate all controls from the operator's seat. **NO RIDERS.**
3. Keep all shields in place and safety switches adjusted properly.
4. Do not leave equipment unattended. **STOP** the engine and remove the key.
5. Do not allow minors or the inexperienced to operate this machine.
6. Keep people and pets a safe distance away from machine using power driven attachments. Injury could result from flying debris.

## OPERATING SAFETY

1. **STOP ENGINE** to install drive belt.
2. **DO NOT** attempt to work on unit or any attachments with the engine running.  
**STOP ENGINE!**
3. Before leaving the tractor seat:
  - **Disengage PTO.**
  - **Set Parking brake.**
  - **Stop Engine.**

### **DANGER**

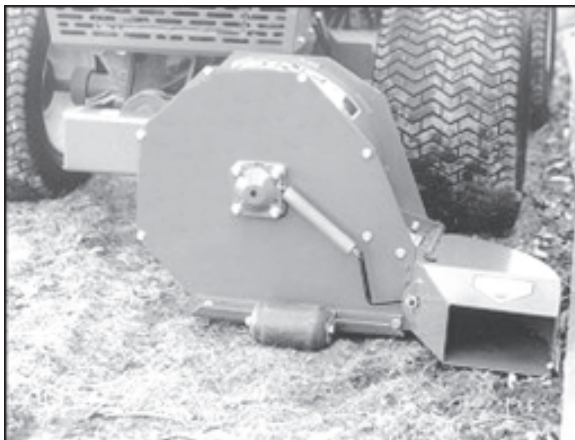
**DO NOT ATTEMPT TO CLEAN INLET OR  
OUTLET AREAS WITH BLOWER RUNNING.**

### **DANGER**

**DO NOT OPERATE WITH PERSONS IN THE  
AREA. HIGH SPEED BLOWER MAY PROPEL  
OBJECTS CAUSING POSSIBLE INJURY OR  
DEATH.**

1. Attach blower to quick hitch front lift, placing drive belt around the left hitch arm.
2. Stop engine and install drive belt.
3. Start engine and engage PTO drive slowly and gradually increase engine speed until desired blower speed is reached.
4. Operate blower as close to the ground as conditions permit. **DO NOT USE "FLOAT" POSITION.** There is an anti-scalp roller on the bottom of the blower housing.
5. Observe the wind direction and work with the wind whenever possible. The blower works equally well when traveling forward or reverse. When clearing large areas it is advisable to use forward and reverse patterns to blow all debris in the same direction.
6. Lower the discharge chute to direct the airflow forward. This is especially helpful when working close to buildings. It can be flipped up or down as needed to direct the airflow.

**USE CAUTION WHEN TURF MAY BE SOFT. SCUFFING CAN OCCUR WHEN THE ANTI-SCALP ROLLER CONTACTS THE TURF SURFACE. DO NOT USE "FLOAT POSITION".**



**Photo 1**  
**Discharge Chute Forward Airflow Position**



**Photo 2**  
**Discharge Chute Left Airflow Position**

## ASSEMBLY INSTRUCTIONS

1. Remove parts from shipping crate.
  2. Remove complete belt shield assembly (Ref. 22 & 24, Figure 1) from main frame.
  3. Place the hitch frame inside the main blower housing channel aligning the six bolt holes to the frame. (See Figure 1)
  4. Fasten securely with six (6) 3/8 X 3/4 flange bolts.
  5. Reinstall belt shield (Ref. 22 ) to the main frame.
  6. Place correct drive belt on blower drive pulley. (Refer to Attachment Belt Size Chart). Replace the belt shield (Ref 24).
  7. Remove the shaft, bolt and nut for the anti—scalp roller from the skid plate. Insert the shaft into the roller and reinstall in the lower hole on the skid plate.
  8. Refer to Figure 2 and attach the discharge chute to the blower housing as shown.
  9. Check all bolts and pulleys. Tighten as needed. Rotate the blower rotor and check for free rotation.
- NOTE:** This is a high speed balanced rotor and care must be taken to have clearance within the housing to avoid damage to rotor or premature failure of parts. If any interference is found contact your Jacobsen dealer.
10. Attach the blower to the power unit (tractor). Engage the PTO slowly and gradually increase engine speed to full throttle to obtain maximum blower speed.

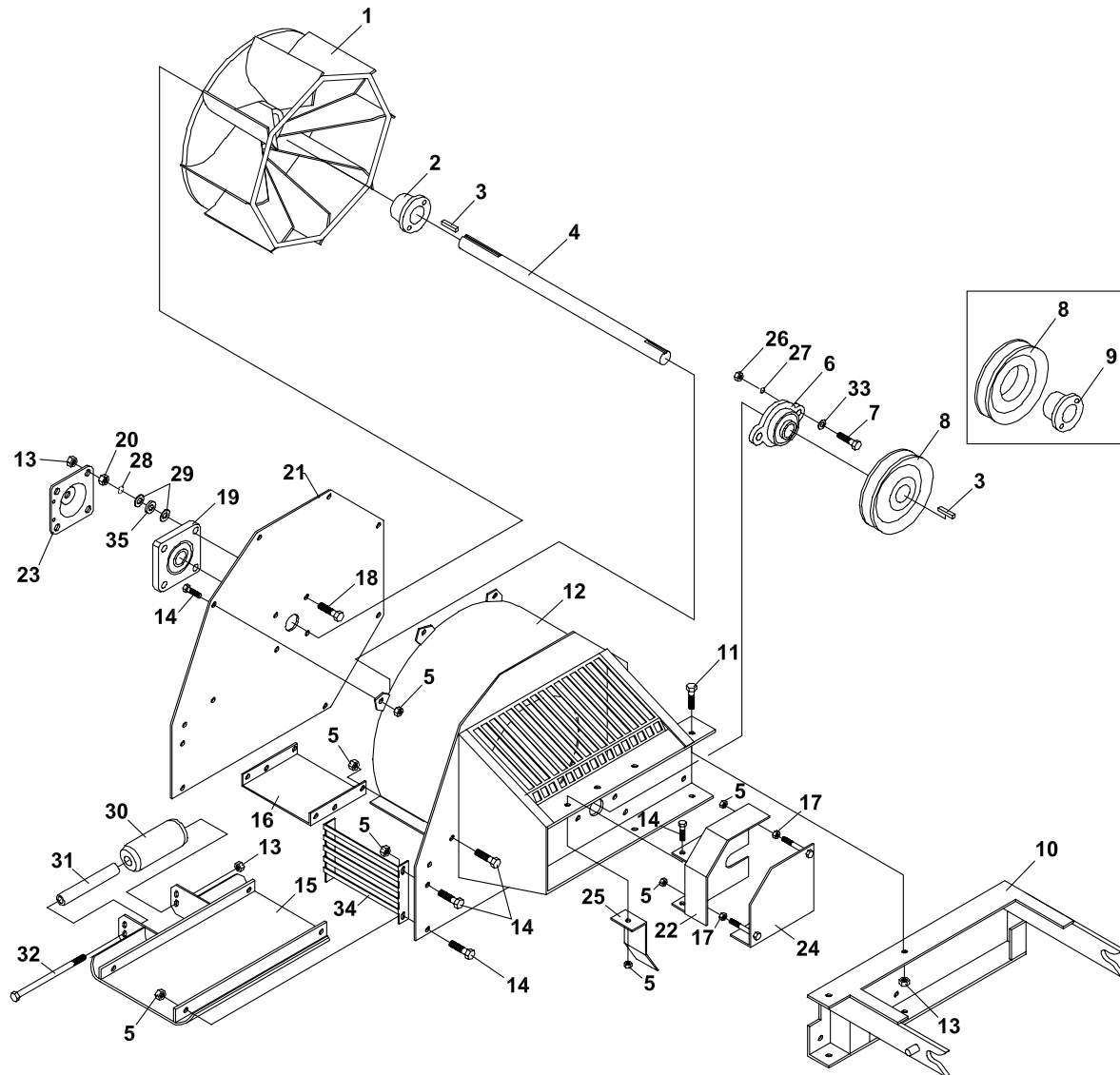


# **PARTS SECTION**

# POWER BLOWER PARTS

# POWER BLOWER

FIGURE 1



# POWER BLOWER

# POWER BLOWER PARTS

## FIGURE 1

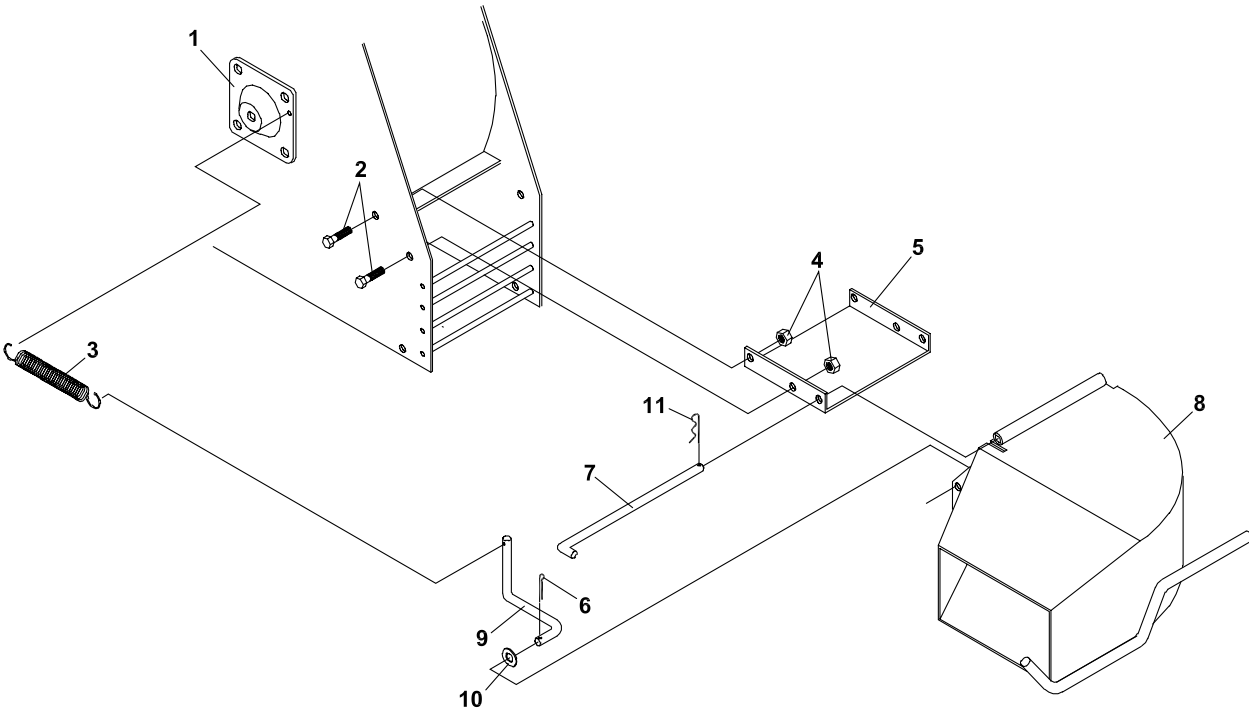
ITM	PART NO.	DESCRIPTION	QTY	ITM	PART NO.	DESCRIPTION	QTY
1	4136430.7	BLOWER ROTOR	1	33	64163-04	25/64X5/8X16GA WASHER	2
2	83-P116	BUSHING	1	34	60-593.7	GUARD-AIR OUTLET	1
3	64164-10	1/4X1/4X1-1/4 MACH KEY	2	35	64-662	BUSHING-THICK	4
4	80-128	MAIN SHAFT	1	*	70-067	KIT-ANTI-SCALP ROLLER (INCLUDES ITEMS 15 & 30 - 32)	1
5	64141-6	NUT, 5/16-18	20				
6	55-FB16016	BEARING-1"	1				
7	64123-47	BLT-HEX 5/16-18X1-1/4	2	*	4116761	DECAL-MADE IN THE USA	1
8	83-BK5016	PULLEY (SN 1629 & UP)	1	*	00-025	DECAL (WARNING KEEP HANDS FROM BELT)	1
	83BK50H	PULLEY (SN 1001 - 1628)	1				
9	83-H16	BUSHING (SN 1001 - 1628)	1	*	81-A042	DRIVE BELT-220	1
10	62-572.7	HITCH FRAME	1	*	81-A040	DRIVE BELT (USED ON 220, 410 & 420 WITH ELECTRIC CLUTCH)	1
11	64139-21	BLT-WLF 3/8-16X3/4	6				
12	62-783.7	BLOWER-MAIN FRAME	1				
13	64141-4	NUT-WLF 3/8-16	11				
14	64139-08	BOLT-5/16-18X3/4 WLF	18	*	81-B041	DRIVE BELT-425	1
15	64-131	SKID PLATE (SN 1001 - 1652)	1	*	81-B040	DRIVE BELT (USED ON 425 & 525 WITH ELECTRIC CLUTCH)	1
	64-672.7	SKID PLATE (SN 1653 & UP)	1				
16	64-496.7	HINGE PLATE	1				
17	64229-02	LOCKNUT-NYLON 5/16-18	2				
18	64123-87	BOLT-HEX 3/8-16X1-3/4	4				
19	55-FB22016	BEARING	1				
20	64025-05	NUT-3/8-16 HEX	4				
21	60-594.7	BLOWER-FRONT PANEL	1				
22	64-430.7	SHIELD-MOUNTING PLATE	1				
23	60-411.7	SHIELD-FRONT BEARING	1				
24	64-426.7	SHIELD-DRIVE PULLEY	1				
25	64-431.7	SHIELD-SHAFT	1				
26	64025-02	NUT-HEX 5/16-18	2				
27	64006-02	LOCKWASHER-HELICAL 5/16	2				
28	64006-03	WASHER, 3/8 HELICAL LOCK	4				
29	64163-61	WSHR .81X.406X16GA	8				
30	44-119	ROLLER-ANTI-SCALP (SN 1653 & UP)	1				
31	80-240	SHAFT-ANTI-SCALP ROLLER (SN 1653 & UP)	1				
32	64123-219	BOLT-HEX 3/8-16X6 (SN 1653 & UP)	1				

**\* NOT ILLUSTRATED**

# DISCHARGE CHUTE

# POWER BLOWER

FIGURE 2



# POWER BLOWER

# DISCHARGE CHUTE

FIGURE 2

ITM	PART NO.	DESCRIPTION	QTY	ITM	PART NO.	DESCRIPTION	QTY
1	60-411.7	SHIELD-FRONT BEARING	1				
2	64139-08	BOLT-5/16-18X3/4 WLF	4				
3	41-051	SPRING	1				
4	64141-6	NUT, 5/16-18	4				
5	64-496.7	HINGE PLATE-CHUTE	1				
6	02-CP0506	COTTER PIN-5/32 X 3/4	1				
7	42-396	HNGE PIN	1				
8	62-623.7	DISCHARGE CHUTE	1				
9	42-397	SPRING LINK	1				
10	64163-61	WSHR .81X.406X16GA	1				
11	02-PP0313	PRESTO PIN-3/32 X 1-5/8	1				
*	00-092	DECAL-DANGER	1				
*	00-093	DECAL-READ OWNER'S MAN	1				

**\*NOT ILLUSTRATED**

## **World Class Quality, Performance And Support**



Equipment from Jacobsen, a Textron company, is built to exacting standards ensured by ISO 9001 and ISO 14001 registration at all our manufacturing locations.

A worldwide dealer network and factory-trained technicians backed by Textron Parts Xpress provide reliable, high-quality product support.



---

***BOB-CAT BROWER BUNTON CUSHMAN RYAN STEINER***