

**80-81**  
**OWNERS MANUAL**



12657 Church Road  
Orrville, Ohio 44667  
Phone: 683-0055

#### **TO THE OWNER**

The purpose of this manual is to assist you in realizing all the benefits anticipated when you purchased your new Steiner Tractor.

The way you operate this product, and the care you give it, will have much to do with its successful performance.

This manual has been prepared and illustrated to give you as much information as possible.

It is important that you read the entire manual carefully before operating your new tractor, and keep it handy for future reference. Your Steiner dealer will be happy to answer any further questions, or refer them to us at Steiner Corporation: 12657 Church Road, Orrville, Ohio 44667.

# CONTENTS

Description .....	1
Pre-Start Instructions .....	2
Operating Instructions .....	3
Driving .....	4
Daily Service Schedule .....	5
Fuel System .....	6
Electrical System .....	7
Trouble Shooting .....	8
Mower Operation .....	9
Mower Maintenance .....	10
Blade .....	11
Parts Identification .....	12
Section 1 (Engine) .....	13 & 14
Section 2 (Hydraulics) .....	15 & 16
Section 3 (Electrical) .....	17 & 18
Section 4 (Controls) .....	19 & 20
Section 5 (Axle & Wheels) .....	21 & 22
Section 6 (Frame & Sheet Metal) .....	23 & 24
Section 7 ( Three-Point Hitch) .....	25
Section 8 (Blade) .....	26
Section 9 (Mower) .....	27 & 28
Steiner Equipment Limited Guarantee .....	29

Date of Purchase: \_\_\_\_\_ Month \_\_\_\_\_ Day \_\_\_\_\_ Year \_\_\_\_\_

Dealer Name \_\_\_\_\_ Phone Number \_\_\_\_\_

Serial Number \_\_\_\_\_

Engine Number \_\_\_\_\_ Make \_\_\_\_\_

## *Description*

The HYDROSTATIC, 4-wheel drive, Steiner tractor is designed with the user in mind. All components are those that have been tested and used in other equipment, and parts are readily available.

The tractor is powered by a Briggs and Stratton, twin cylinder engine, driving an industrial hydraulic pump. This pump supplies the power to the two identical transaxles, providing the four-wheel drive.

Center pivot power steering enables it to operate in close quarters and further enhances the 4-wheel drive ability. Its low center of gravity and large, low pressure, high flotation tires enables it to operate on side hills far steeper than anything in its category.

The ruggedly built, front-mounted mower enables you to mow under bushes and shrubs or out over water or ditch banks. It, along with the snowblower, is designed to be removed in seconds by removing one drive belt, pulling a release latch, and backing away. To hook up, just reverse the procedure.

The 48-inch blade just snaps on and off and the front hydraulic lift is standard equipment. Category "O" 3-point-hitch for the rear is optional and enables the tractor to use most of the equipment available, such as plows, scrapers, and cultivators.

All the bearings on the mower and snowblower are standard industrial grease-type roller bearings that can be purchased 'off the shelf' locally. All belts and pulleys likewise are standard industrial items that can also be locally purchased. No more going to a specific dealer for a one-of-a-kind item!

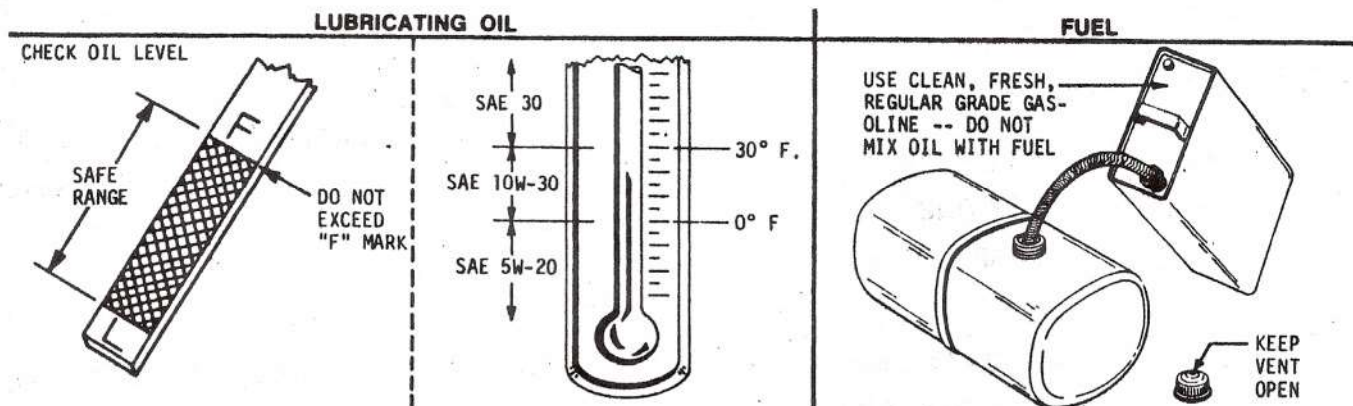
The Steiner tractor also has as standard equipment, adjustable seat, 12-volt automotive type battery, electric start, lights, and power steering. The fenders double as tool boxes.

The tractor has been bought and used with great success in many places — schools, city and county parks, campgrounds, golf courses, orchards, vineyards, industrial parks, chicken farms. and by many, many homeowners.

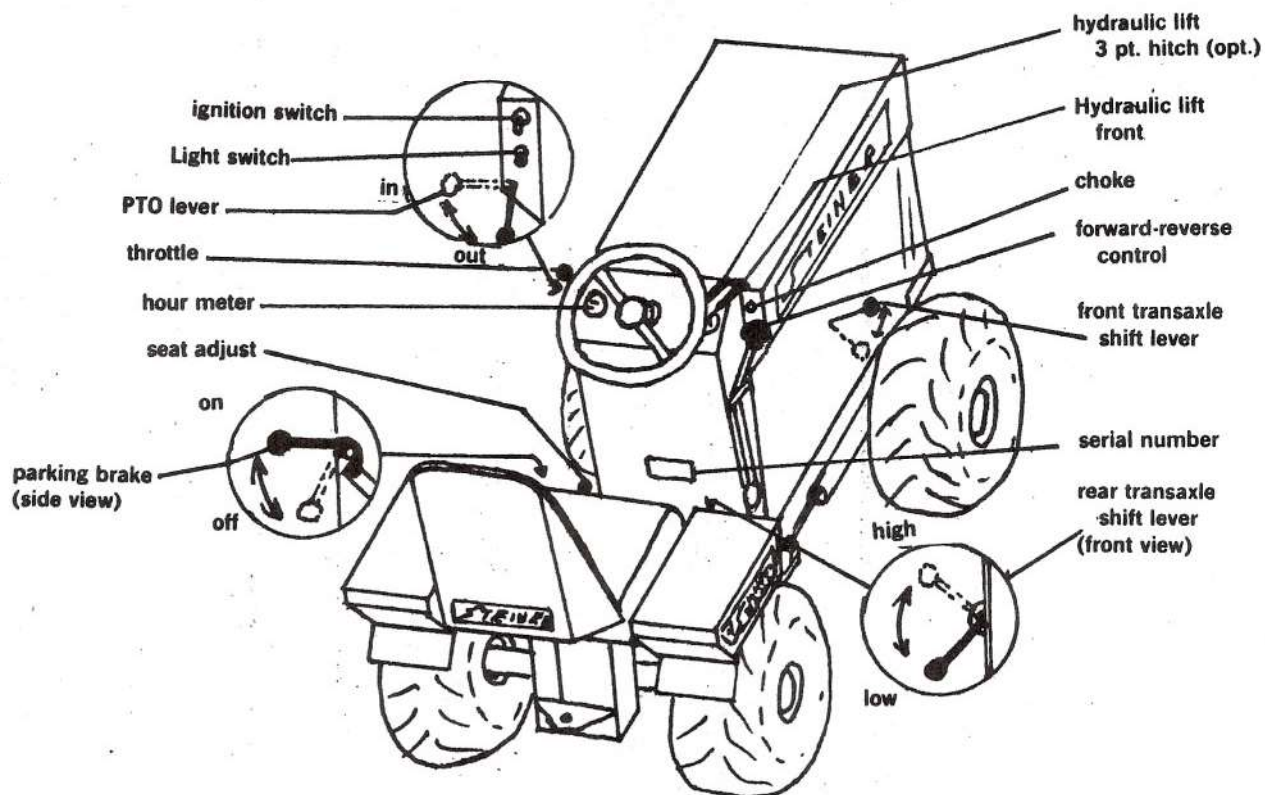
It's more than a mower, more than a tractor — it's even a "fun to run" machine!



# PRE-START INSTRUCTIONS



1. Always check engine oil.
2. Make sure you have plenty of fuel.
3. Visually check tires.
4. Adjust seat.
5. READ SAFETY DECALS.
6. Get emotionally ready for a good experience.



# Operating Instructions

## IMPORTANT!

CHECK ALL BOLTS FOR SIGNS OF  
LOOSENING AFTER ONE HOUR OF  
OPERATION AND DAILY THEREAFTER

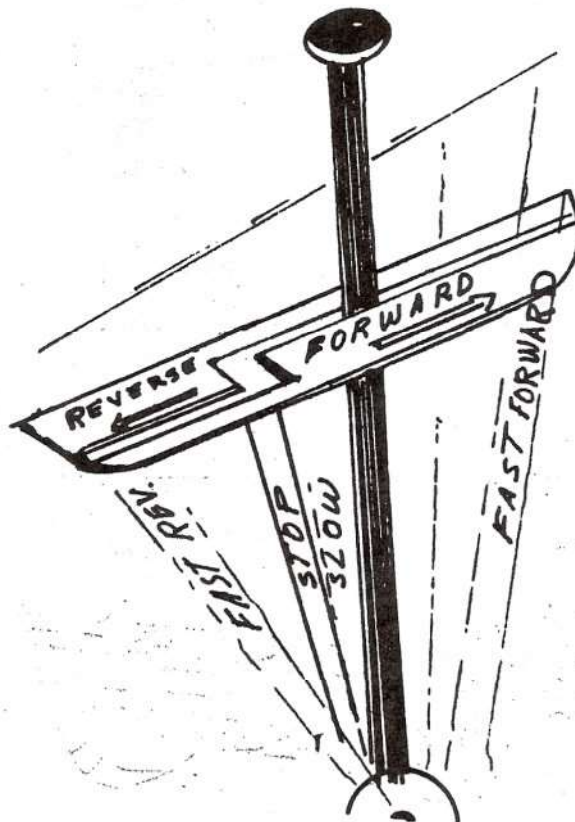
MOWER AND OTHER ATTACHMENTS:  
CHECK ALL BOLTS AND SET SCREWS  
ON PULLEYS AND SHAFTS FOR SIGNS  
OF LOOSENING  
TIGHTEN AS NEEDED!

## STARTING

1. Put forward-reverse control in Neutral.
2. Make sure P.T.O. is in the "Out" position.
3. Pull throttle back approximately one inch.
4. Pull choke all the way out.
5. Turn key to right. Tractor should start.
6. Push choke most of the way in until engine warms up.
7. In cold weather, let hydraulic oil warm up a few minutes before using tractor.
8. Make sure both transaxles are in the SAME GEAR.
9. The farther you push (or pull) the forward-reverse lever, the FASTER you go.

NOTE: Move control gradually.

10. To STOP, pull the control to NEUTRAL.



NOTE: LEVER MUST BE IN NEUTRAL AND P.T.O. IN THE "OUT" POSITION  
OR TRACTOR WILL NOT START!

# *Driving the Steiner Tractor*

Driving the Steiner Tractor with its center pivot steering is usually somewhat of a new experience, but after a few minutes this "different feel" vanishes and is replaced by a feeling of pure pleasure.

With its superb maneuverability and 4-wheel drive, the tractor becomes a "go almost anywhere" machine; therefore, we urge **EXTREME CAUTION**, lest these features get you into trouble.

We offer these operating tips to ensure your safety and pleasure:

- A.. Take some time and get used to the handling characteristics of your new tractor.
- B. Always look before backing.
- C. Slow down over rough terrain.
- D. Do not make sharp turns at high speeds.
- E. When going down steep grades with mower on, put mower in DOWN position.

**CAUTION: IF MOWER IS NOT ATTACHED,  
BACK DOWN STEEP GRADES.**

- F. When going up steep grades, put transaxles in low gear and open throttle enough to provide adequate power to prevent stalling. Control speed with forward-reverse lever.
- G. Do not expect your tractor to think for you.

**USE COMMON SENSE!!**





# Daily Service Schedule

1. Check fuel level. Use good, clean, regular, or unleaded gasoline.
2. Check engine oil level. Use HD30 above 32° F; HD10W40 when below 32° F.
3. Visual inspection of:
  - A. Bolt and fittings for signs of loosening.
  - B. Accumulation of dirt or foreign material around engine restricting engine cooling.
  - C. A clean tractor is easier to maintain and a pleasure to use.

**KEEP IT CLEAN!**

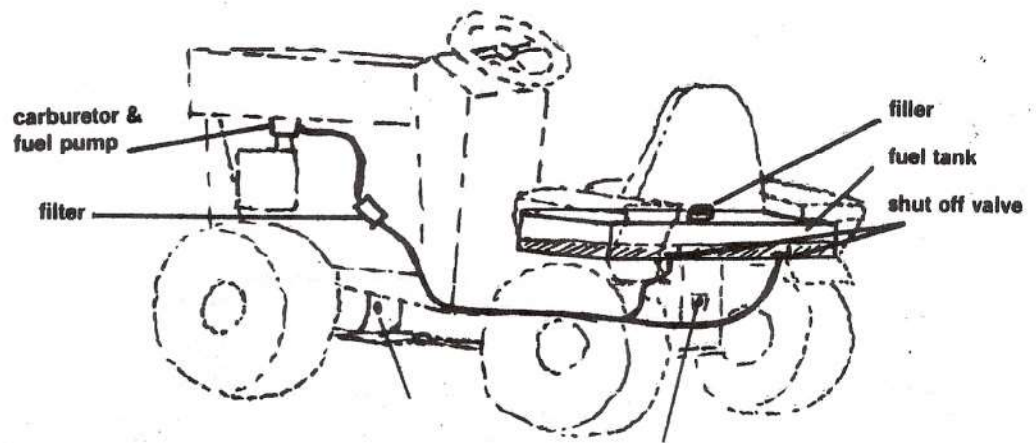
\*\*\*\*\*

## 25 Hour Service Schedule

- |                                |  |
|--------------------------------|--|
| 1. Change engine oil.          | Use HD30 Above 32° F<br>Use HD10W40 below 32° F.<br>Capacity: 1-1/2 quarts U.S.  |
| 2. Check air cleaner.          | Clean as necessary.  |
| 3. Check battery water level.  | Fill as necessary.<br>1/4 inch over plates.  |
| 4. Check transaxle oil levels. | Refill as needed with 1H Hytran<br>or JD 303 special purpose oils,<br>or see your dealer.<br>DO NOT USE motor oil<br>or automatic transmission oil.                  |
| 5. Visual inspection of:       | A. Bolt and fittings for signs<br>of loosening. Tighten as necessary.<br>B. Accumulation of dirt or foreign<br>material around engine restricting<br>engine cooling. |
| 6. Lubrication.                | Grease fitting on center pivot ball.   |
| 7. Check tire pressure.        | Adjust to 5 lbs. when using front<br>mounted equipment. Rear tires may<br>have 4 lbs.  |
| 8. Check fuel filter.          | Replace if extremely dirty.  |
| 9. Mower.                      | Grease all fittings.<br>Do not over-grease.  |



# Fuel System



NOTE transaxle fluid level and fill plug on rear of both transaxles.  
Front level at plug  
Rear level 3 inches below plug

## Annual Service Schedule

### TRACTOR:

In addition to daily and 25-hour service:

1. Replace hydraulic oil filter (Michigan Fluid Power S-29 NAPA 1552 or equivalent), and refill transaxles as needed.
2. When storing tractor, drain fuel tank and maintain tire pressures as specified.

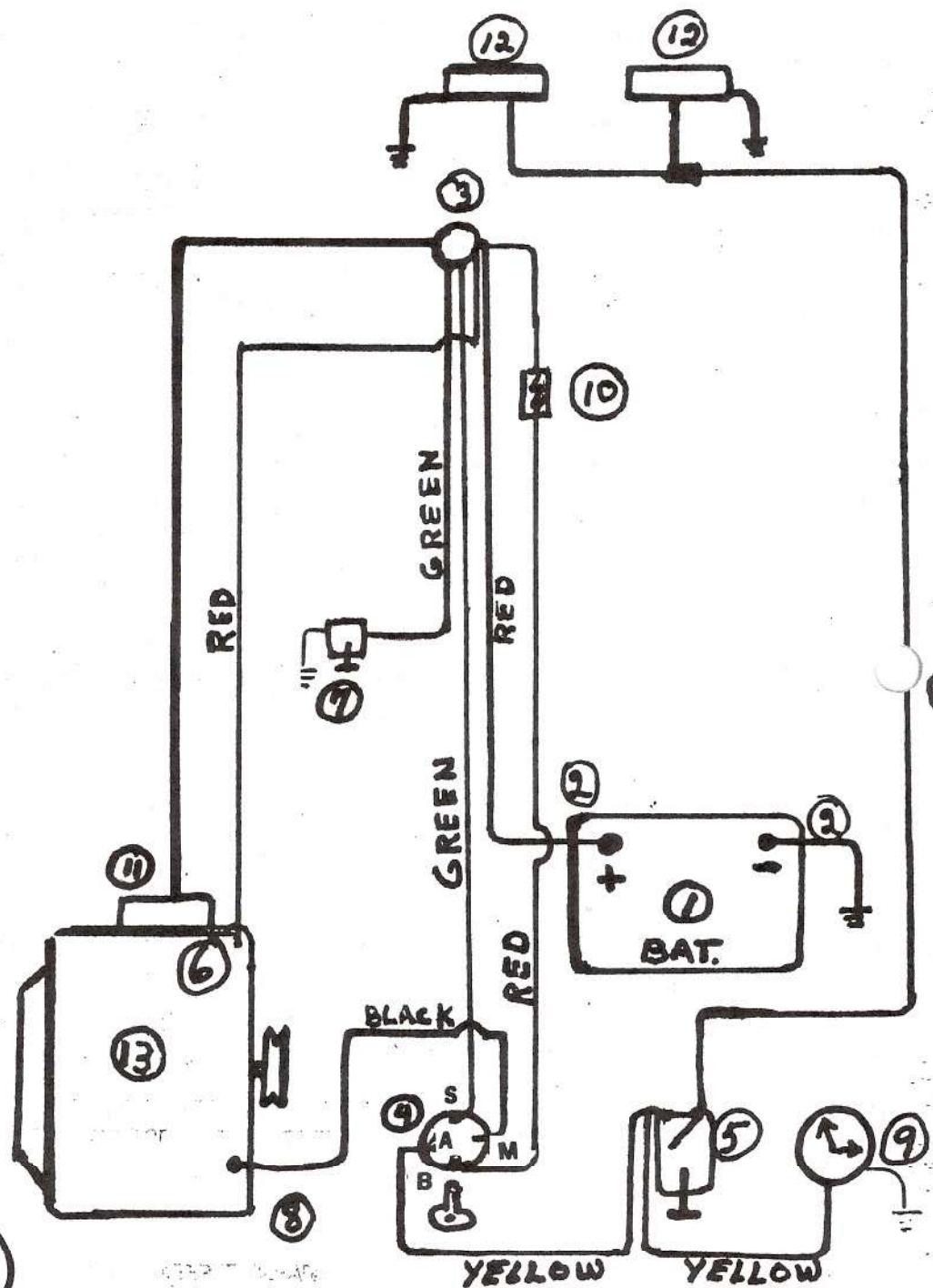
### MOWER:

1. Remove and sharpen mower blades.
2. Grease all fittings. Do not over-grease.
3. Clean grass and dirt accumulation under deck before storing.  
The acid in grass causes corrosion to mower parts.

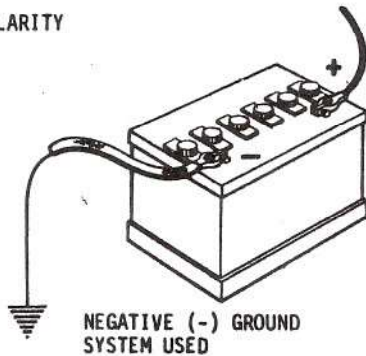
**KEEP IT CLEAN!**

## Electrical System

- 1.. Battery 12V  
Group - 22F
2. Battery cables
3. Solenoid switch
4. Ignition switch
5. Light switch
6. Charging circuit 12V
7. Neutral start switch
8. Magneto
9. Hour meter
10. Fuse
11. Starter
12. Lights
13. Engine



### CHECK POLARITY



# Trouble Shooting

SYMPTOMS	POSSIBLE CAUSE	REMEDY
Engine fails to start.	<ol style="list-style-type: none"> <li>1. Forward-reverse control not in neutral.</li> <li>2. P.T.O. lever not in neutral.</li> <li>3. Fuse blown.</li> <li>4. Discharged battery.</li> <li>5. Dirty fuel filter or out of fuel</li> </ol>	<ol style="list-style-type: none"> <li>1. Position control lever in neutral.</li> <li>2. Position P.T.O. lever in neutral.</li> <li>3. Replace with 14A fuse.</li> <li>4. Charge battery.</li> <li>5. Replace fuel filter, and/or fill.</li> </ol>
Loss of power.	<ol style="list-style-type: none"> <li>1. Dirty air cleaner.</li> <li>2. Transaxle shifters not in same range.</li> <li>3. Low oil level in transaxles.</li> <li>4. Parking brake improperly adjusted.</li> <li>5. Dirty fuel filter.</li> </ol>	<ol style="list-style-type: none"> <li>1. Remove air cleaner; clean or replace.</li> <li>2. Shift both shift levers into proper range.</li> <li>3. Refill transaxles to proper level.</li> <li>4. Adjust parking brake.</li> <li>5. Replace fuel filter.</li> </ol>
Excessive wheel slippage.	<ol style="list-style-type: none"> <li>1. Tire pressure too high.</li> <li>2. One transaxle shifter in neutral.</li> </ol>	<ol style="list-style-type: none"> <li>1. Adjust tire pressure to 5 lbs.</li> <li>2. Shift both shift levers into proper range.</li> </ol>
Tractor jerks or is not responsive to control lever movement — too large neutral movement.	<ol style="list-style-type: none"> <li>1. Loose pump control arm or linkage.</li> <li>2. Low oil level in transaxle.</li> <li>3. Loose or dirty hydraulic filter.</li> <li>4. Transaxles in neutral.</li> </ol>	<ol style="list-style-type: none"> <li>1. Tighten pump control arm or linkage.</li> <li>2. Refill transaxles to proper level.</li> <li>3. Tighten or replace hydraulic filter.</li> <li>4. Check shifters front and rear.</li> </ol>
Noisy operation.	<ol style="list-style-type: none"> <li>1. Low oil level in transaxles.</li> <li>2. Loose or dirty hydraulic filter.</li> <li>3. Low hydraulic pressure.</li> <li>4. Restriction or air leak in pump supply lines.</li> </ol>	<ol style="list-style-type: none"> <li>1. Refill transaxles to proper level.</li> <li>2. Tighten or replace hydraulic filter.</li> <li>3. See your dealer for pump repairs.</li> <li>4. Replace defective hose.</li> </ol>
Loss of power steering.	Same as above.	Same as above.
Loss of lift (mower/blade)	Same as above.	Same as above.

# Mower Operation

Be sure to observe all Safety Decals. When attaching the mower, drive tractor into place, engaging the quick attach. Make sure it is latched securely. Shut off tractor. DO NOT attempt to put drive belt on while tractor engine is running. MAKE SURE P.T.O. lever is in the OUT position.

- Put on drive belt.
- Make sure all guards are in place.
- Set mower to desired height.
- Start tractor and engage belt slowly.
- Make sure mower is in the FLOAT position.  
(See "LIFT").
- When mowing, pull the throttle most of the way back to ensure proper blade speed.  
Most level mowing can be done in "HIGH" gear with speed controlled by the FORWARD—REVERSE lever.
- When going UP steep grades, put tractor transaxles in "LOW" and keep engine at near full speed to minimize wheel slippage.
- When going DOWN steep inclines or loading on or off truck with mower on, put mower in the "DOWN" position to prevent lifting rear wheels off the ground.

## SAFETY PRECAUTIONS:

- A. Keep all guards in position.
- B. Do not work around mower when it is running.
- C. Watch out for debris in mowing area.
- D. Be extremely careful when mowing steep inclines.

## FRONT HYDRAULIC LIFT:

The lift is designed to let the mower or other equipment float when in the "DOWN" position and should always be used this way when mowing.

Down pressure may be desired when using the blade; therefore, you can achieve this by putting a 3/8" bolt in the hole to prevent the lift from floating.

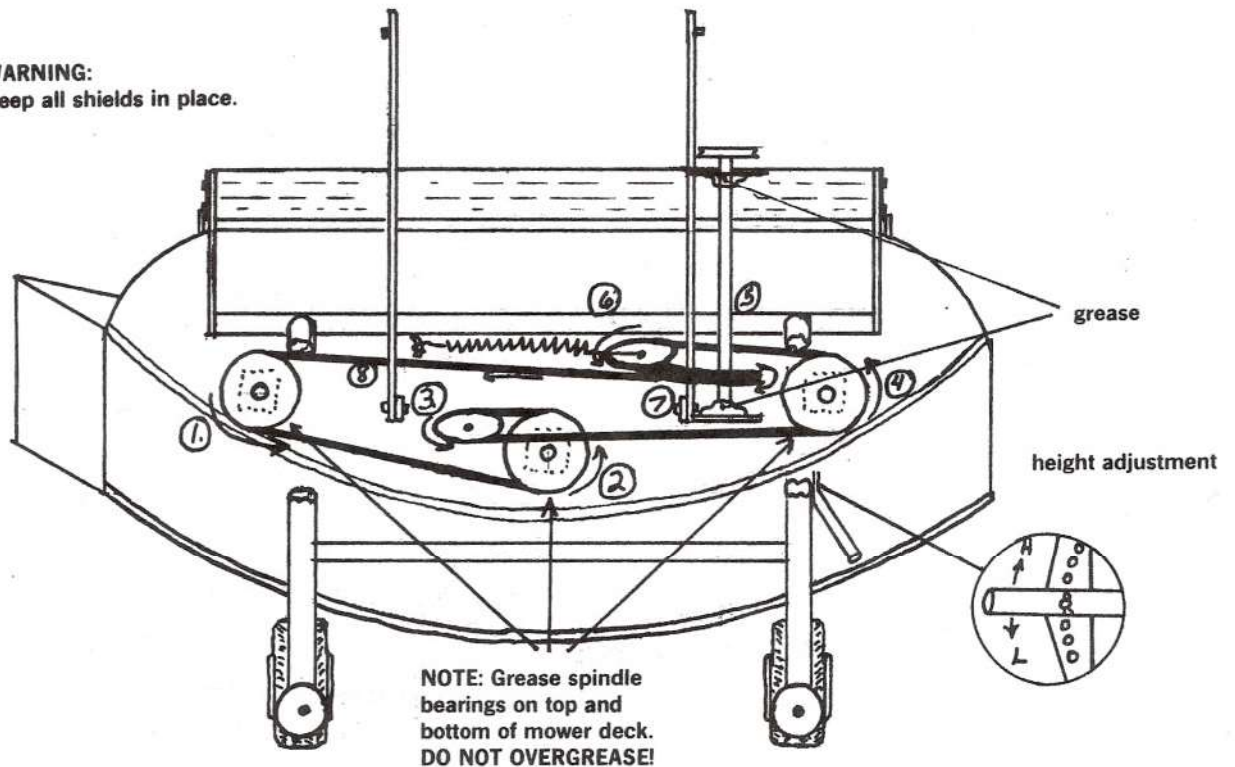
**ALWAYS REMOVE BOLT BEFORE MOWING.**

**DANGER**  
**KEEP HANDS AND FEET**  
**AWAY FROM REVOLVING BLADE**



# Mower Maintenance

**WARNING:**  
Keep all shields in place.



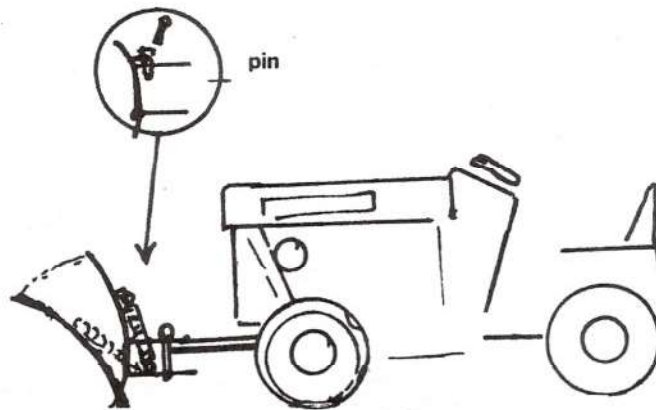
## INSTALLING NEW BELT:

1. Start belt on left pulley.
2. Wrap around center pulley.
3. Wrap around idler from bottom to top.
4. Go to and around right pulley.
5. Belt goes UNDER drive shaft and frame.  
(bolts in frame have to be removed.)
6. Belt wraps around spring-loaded idler from bottom to top.
7. The OVER frame to top of main drive pulley.
8. Then UNDER frame pieces back to starting place.

NOTE: If wood bearings on gauge roller squeak, remove and grease!

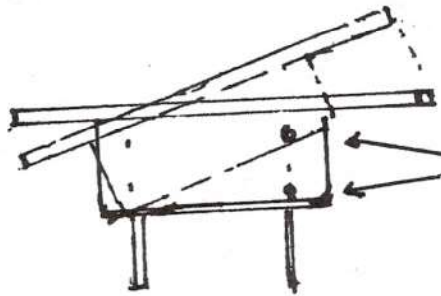
**WARNING**  
**KEEP HANDS AWAY FROM**  
**BELT WHILE ENGINE IS RUNNING**

## Blade

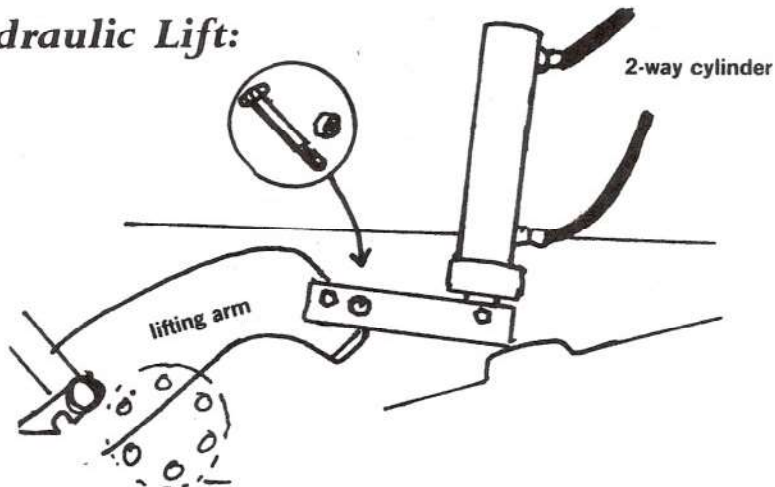


Dozer blade is equipped with spring "trip" to prevent damage to driveway surface.  
For heavy work, insert pin to make blade solid.

## Angling Blade



## Hydraulic Lift:



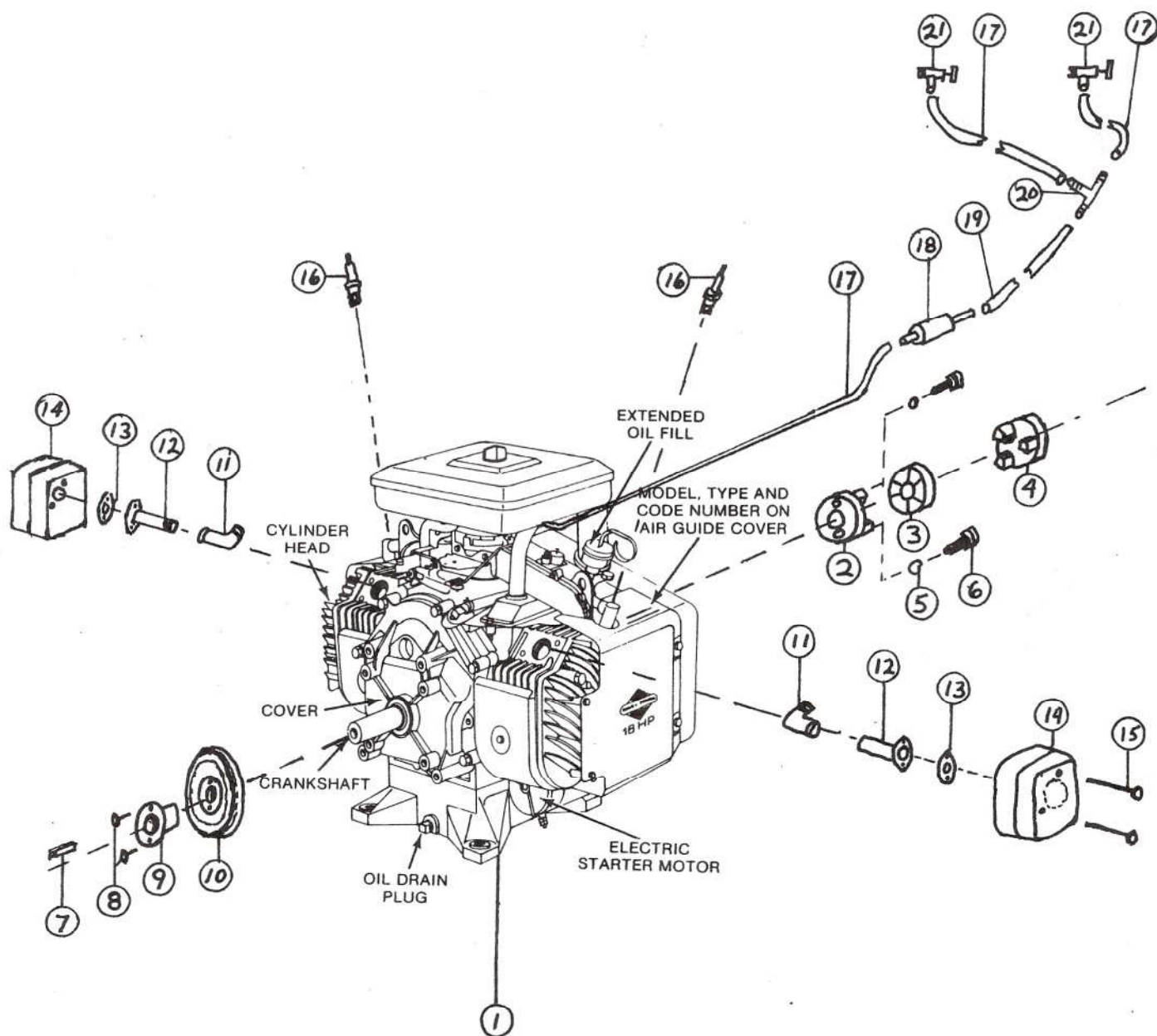
The hydraulic lift on the Steiner Tractor is equipped with 2-way controls and cylinders. The lifting mechanism is designed to be operated either "FLOAT" or with "DOWN PRESSURE."

To obtain "DOWN PRESSURE", a 3/8" bolt or pin is inserted into the hole in lifting arm. ALWAYS REMOVE BOLT WHEN NOT USING BLADE. MOWER MUST BE OPERATED IN THE "FLOAT" POSITION TO PREVENT DAMAGE!

## ***Parts Identification***

Section 1 .....	Engine
coupling, gas line, muffler	
Section 2 .....	Hydraulics
pump, motors, cylinders, valves, fittings & hoses	
Section 3 .....	Electrical
battery, switches, wiring	
Section 4 .....	Controls
steering, levers, brake, P.T.O., belts	
Section 5 .....	Axle & Wheels
Section 6 .....	Frame & Sheet Metal
Section 7 .....	Three-Point Hitch
Section 8 .....	Blade
Section 9 .....	Mower

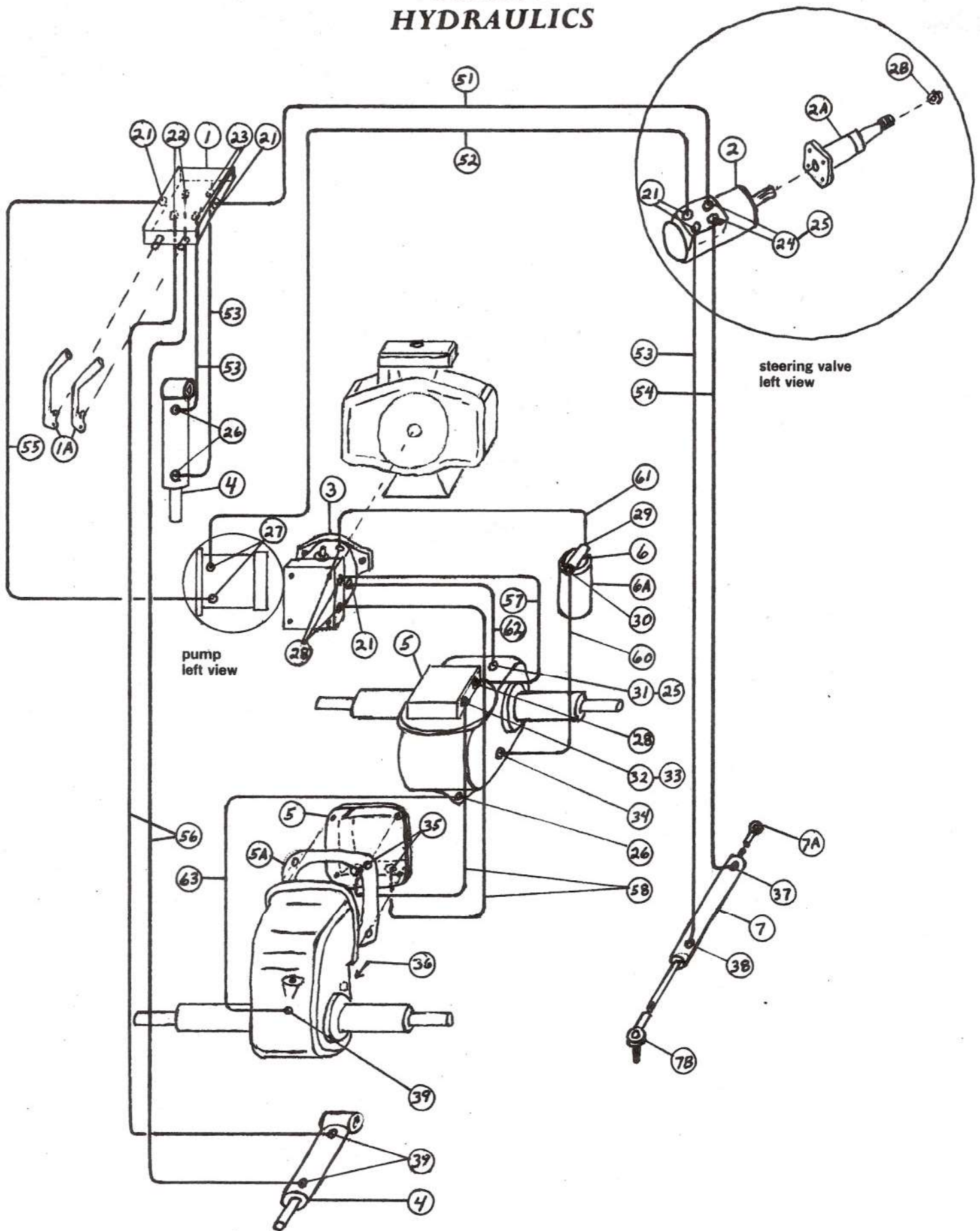
# Section 1 ENGINE





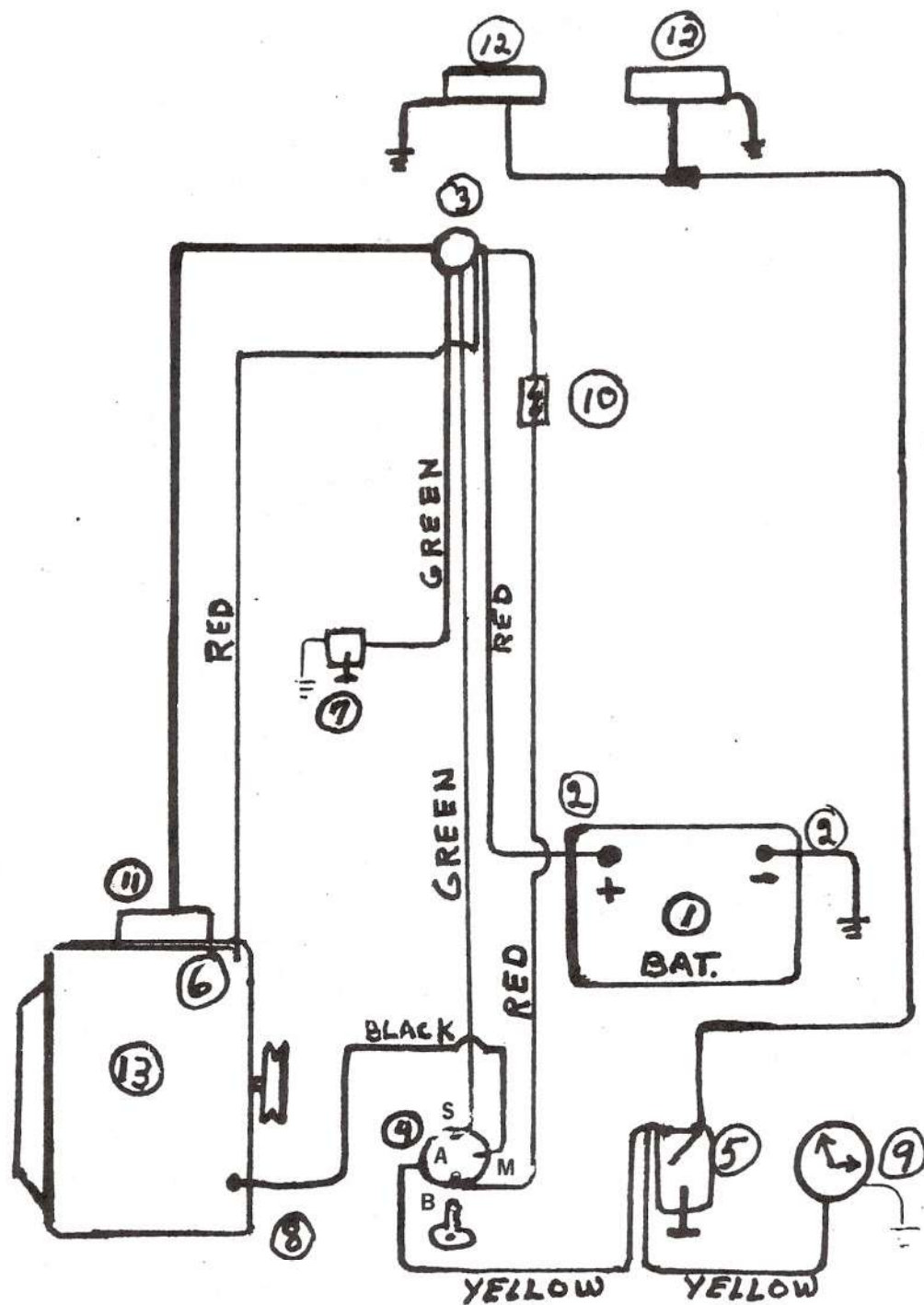
REF.	Part No.	DESCRIPTION	Quan.
1	AOP 1001 A	Engine, Twin Cylinder 18 HP, Briggs & Stratton	1
2	AOS 1002 A	Coupler, Engine — special	1
3	AOP 1003 A	Coupler, insert — special	1
4	AOS 1004 A	Coupler, pump — special	1
5	AOP 1005 A	Lock washer — special	2
6	AOP 1006 A	3/8 x 1 Socket Head Cap Screw — special	2
7		1/4 x 1 straight key	1
8		1/4 x 3/4 cap screw	2
9	AOP 8019 A	1" Hub, pulley	1
10	AOP 8020 A	6" V-Belt pulley	1
11	AOS 1009 A	3/4 Pipe Street Elbow — special	2
12	AOS 1010 A	Extension, muffler — special	2
13	AOP 1011 A	Gasket, muffler	2
14	AOP 1012 A	Muffler	2
15	AOP 1013 A	Bolt, muffler	4
16	RJ-8 Champion	Spark plugs	2
17	AOP 1014 A	Gas line 1/4" tubing — 1/4 x 22" long	3
18	AOP 1016 A	1/4" in line filter	1
19	AOP 1015 A	1/4 x 28" long	1
20	AOP 1017 A	1/4" Tee	1
21	AOP 1018 A	Shut off valve	2

## Section 2 HYDRAULICS

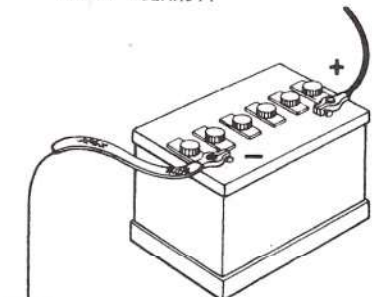


REF.	PART NUMBER	DESCRIPTION	Quan
1	AOP 2001 A	4-Way Hydraulic Control Valve	1
1A	AOP 2002 A	Lever Pin & S hook r. & l.	2
2	AOP 2003 A	Valve, steering	1
2A	AOP 2004 A	Post, steering	1
2B		Nut - 3/4" SAE Jam	1
3	AOP 2005 A	Pump, hydraulic	1
4	AOS 2006 A	Cylinder Lift	1
	AOS 2006 A	Cylinder Lift (optional 3 pt. hitch)	1
5	AOP 2007 A	Motor, hydraulic, front	1
	AOP 2007 A	Motor, hydraulic, rear	1
5A	AOP 2008 A	Gasket	2
6	AOP 2009 A	Filter, complete Michigan Fluid Power	1
6A	AOP 2010 A	Element, Filter S-29	1
7	AOS 2011 A	Cylinder, steering	1
7A	AOP 2012 A	Spherical rod end 1/2"	1
7B	AOP 2013 A	Spherical rod end 5/8"	1
<b>Fitting descriptions are Parker numbers</b>			
21		2503-8-6 — O'ring 90°	5
22		05CP-6 — O'ring Plug	2
		or 0503-6-6 — (optional 3 pt. hitch)	2
23		0503-6-6 — O'ring adapter	2
24		0502-8-4 — O'ring adapter	2
25		5603-4-6 — 90°	3
26		3103-6-6 — 45°	3
27		2503-6-6 — O'ring 90°	2
28		2503-8-8 — O'ring 90°	4
29		2103-12-8 — 90°	1
30		2103-12-10 — 90°	1
31		0502-10-4 — O'ring adapter	1
32		2507-8-6 — O'ring 90° swivel	1
33		2103-6-8 — 90°	1
34		2103-6-10 — 90°	1
35		3503-8-8 — O'ring 45°	2
36		05CP-10 — O'ring plug	1
37		2103-4-6 — 90°	1
38		3103-4-6 — 45°	1
39		2103-6-6 — 90°	3
<b>All couplings 37° Female swivel No. 6 couplings.</b>			
<b>All hose measurements before couplings installed</b>			
<b>1/4" Synflex singlebraid</b>			
51		21"	1
52		11"	1
53		24"	3
54		35"	1
55		17"	1
56		63" — (optional 3 pt. hitch)	2
<b>All couplings 37° No. 8 female swivel couplings</b>			
<b>3/8 Double Wire Braid</b>			
57		22"	1
58		40"	2
60		5/8 Push-lock with No. 10 female swivel couplings"	1
61		1/2 Push-lock with No. 8 female swivel couplings 6"	1
62		3/8 Push-lock with No. 6 female swivel couplings	1
62		13 1/2	1
63		38 1/2	1

# Section 3 ELECTRICAL



CHECK POLARITY

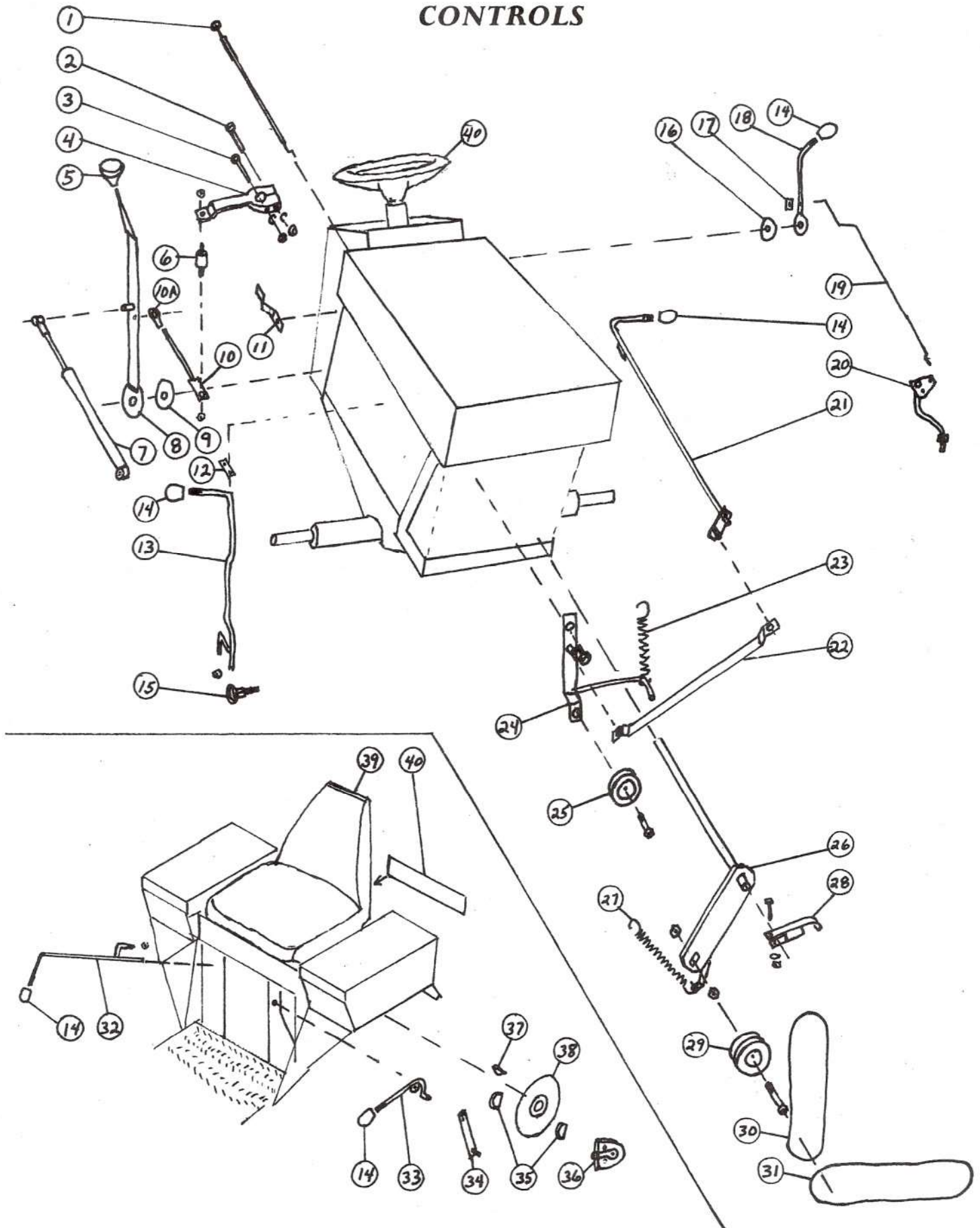


NEGATIVE (-) GROUND  
SYSTEM USED



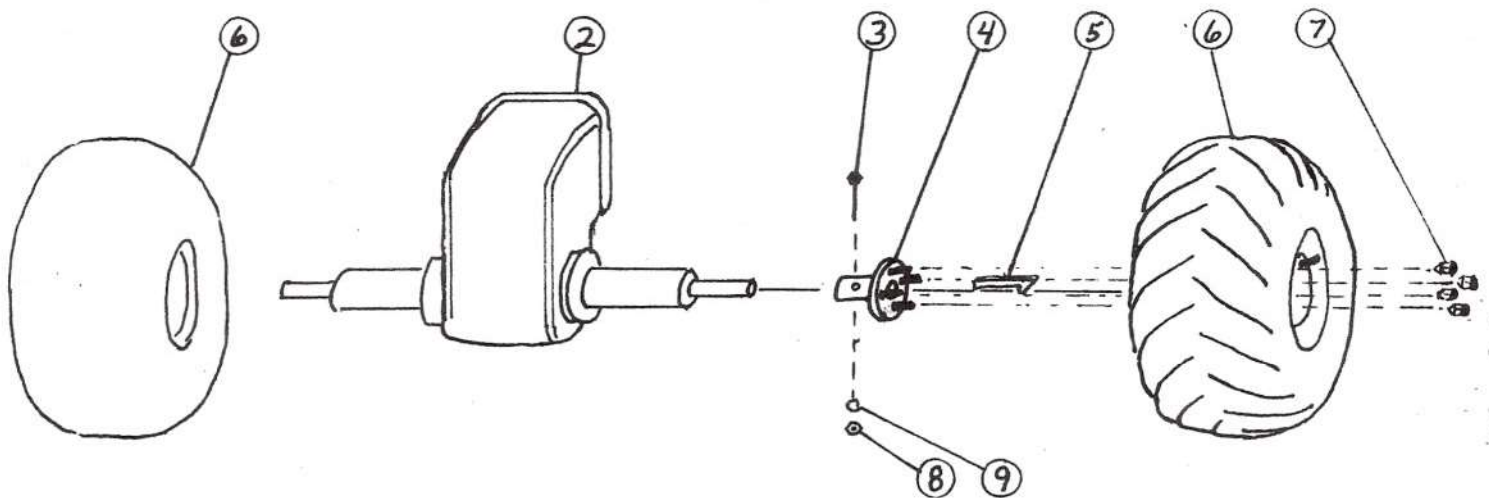
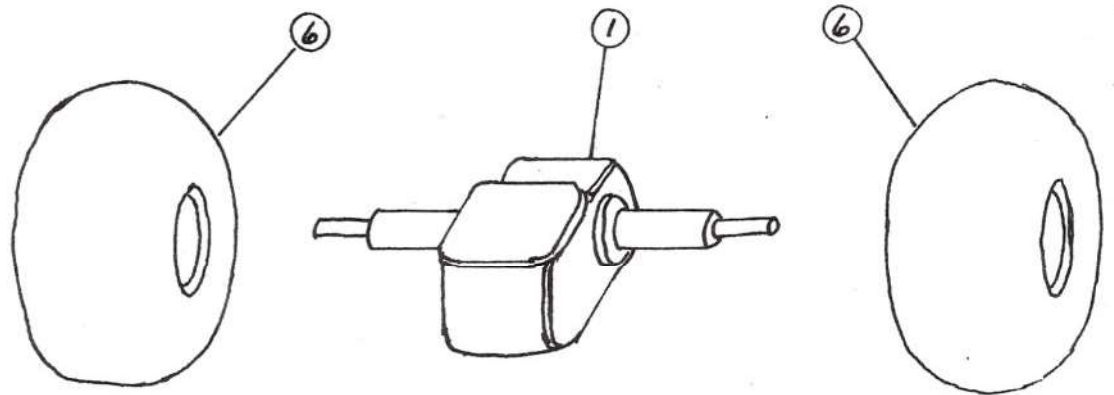
REF.	PART NUMBER	DESCRIPTION	Quan
1	Group 22NF	Battery — Group 22NF	1
2		Battery cables	
	AOP 3001 A	Positive 16"	1
	AOP 3002 A	Negative 22"	1
	AOP 3003 A	Starter 28"	1
3	AOP 3004 A	Solenoid	1
4	AOS 3005 A	Ignition switch	1
5	AOS 3006 A	Light switch	1
6		Rectifier (Briggs & Stratton)	
7		Neutral start switch	
	AOS 3007 A	P.T.O. Lever	1
	AOS 3008 A	Forward reverse lever magneto internal (Briggs & Stratton)	1
8			
9	AOP 3009 A	Hour meter	1
10		Fuse 14A	1
11		Starter (Briggs & Stratton)	
12	AOP 3010 A	Lights, work	2
13		Engine (see section 1)	
	AOS 3011 A	Wiring harness — includes fuse holder	1

## Section 4 CONTROLS



REF.	PART NUMBER	DESCRIPTION	Quan
1	AOS 4001 A	Choke, cable	1
2		3/8 x 1-3/4 bolt, lockwasher and nut	1
3		1/4 x 2 bolt, lockwasher and nut	1
4	AOS 4002 A	Control lever, pump	1
5	AOP 4004 A	Knob, large	
6	AOP 4004 A	Vibration isolator	1
7	AOP 4005 A	Stabilizer, control	1
8	AOS 4006 A	Forward-Reverse control lever	1
9	AOP 4007 A	Friction washer	1
10	AOS 4008 A	Pump link assembly	1
10A	AOP 4009 A	Spherical rod end 1/4"	1
11	AOS 4010 A	Neutral start strap	1
12	AOS 4011 A	Strap, shifter	1
13	AOS 4012 A	Shifter, front transaxle	1
14	AOP 4013 A	Knob, small	5
15	AOS 4014 A	Pivot shifter	1
16	AOP 4015 A	Friction washer	1
17	AOP 4016 A	3/16 speed nut	1
18	AOS 4017 A	Throttle lever	1
19	AOS 4018 A	Throttle linkage	1
20	AOS 4019 A	Pivot, throttle linkage	1
21	AOS 4020 A	Lever, P.T.O.	1
22	AOS 4021 A	Link, P.T.O.	1
23	AOP 4022 A	Spring, P.T.O. idler arm	1
24	AOS 4023 A	Arm, P.T.O. idler	1
25	AOP 8024 A	Flat idler, P.T.O.	1
26	AOS 4025 A	Arm, drive idler	1
27	AOP 4022 A	Spring, drive idler	1
28	AOS 4026 A	Release, drive idler	1
29	AOP 8027 A	Assembly, drive idler	1
30	AOP 8028 A	Belt, engine drive A40	1
31	AOP 8028 A	Belt, implement drive, A40	1
32	AOS 4029 A	Shifter, rear transaxle	1
33	AOS 4030 A	Parking brake lever	1
34	AOS 4031 A	Parking brake link	1
35	AOP 4032 A	Parking brake puck (inner & outer)	2
36	AOP 4033 A	Parking brake assembly	1
37		Key, woodruff 3/16 x 3/4	1
38	AOP 4034 A	Disc, parking	1
39	AOP 4035 A	Seat Assembly	1
40	AOS 4036 A	Steering wheel	1
41	AOS 003	Decal, small Steiner	

**Section 5**  
**AXLE & WHEELS**

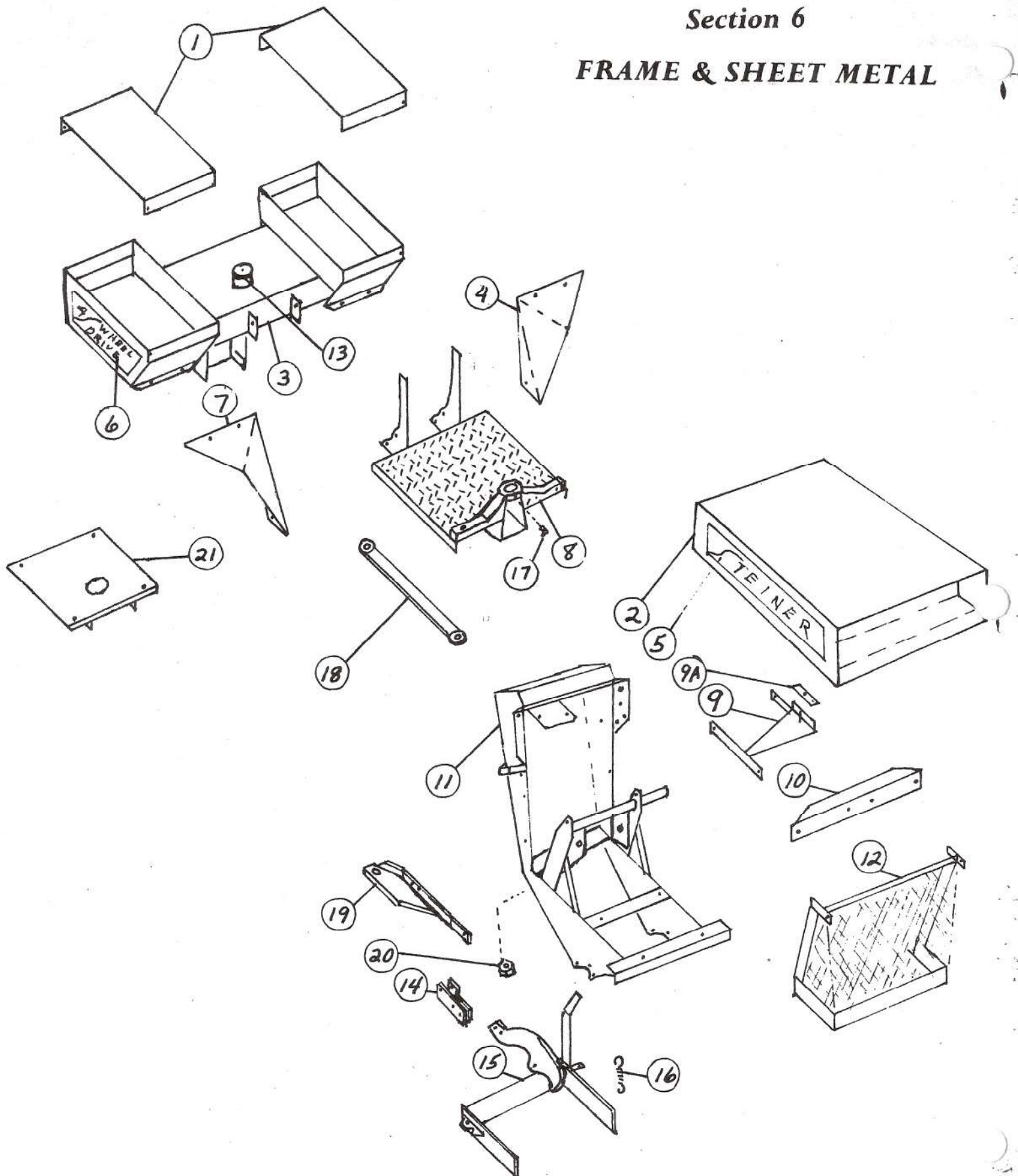




REF.	PART NUMBER	DESCRIPTION	Quan
1	AOS 5001 A	Transaxle, front	1
2	AOS 5002 A	Transaxle, rear	1
3		1/4 x 2 bolt	4
4	AOS 5003 A	Hub, 4 bolt	4
5	AOP 5004 A	Gibb key	4
6		Tire & Rim Assembly	
	AOP 5006 A	Right	2
	AOP 5005 A	Left	2
7	AOP 5007 A	Nuts, wheel — 1/2" SAE	16
8		1/4" nut	4
9		1/4" lock washer	2

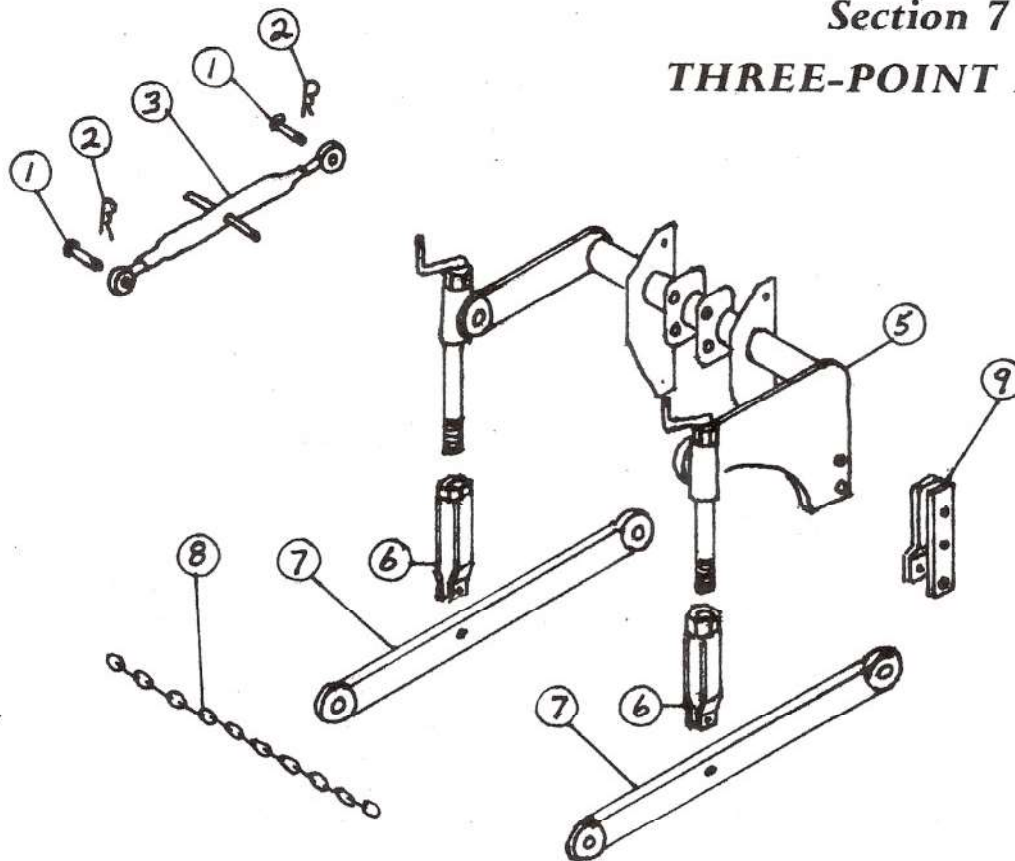
## Section 6

### FRAME & SHEET METAL



REF.	PART NUMBER	DESCRIPTION	Quan
1	AOS 6001 A	Fender lid	2
2	AOS 6002 A	Hood	1
3	AOS 6003 A	Gas tank & hitch and tool box assembly	1
4	AOS 6005 A	Left Fender	1
5	AOS 001	Decal, Steiner	2
6	AOS 002	Decal, 4 wheel drive	2
7	AOS 6004 A	Right fender	1
8	AOS 6006 A	Rear frame & platform	1
9	AOS 6007 A	Battery box	1
9A	AOS 6018 A	Battery hold down	1
10	AOS 6008 A	Support, grille	1
11	AOS 6009 A	Front frame & dash	1
12	AOS 6010 A	Grille	1
13	AOP 6011 A	Cap, gas	1
14	AOS 6012 A	Link, front lift	1
15	AOS 6013 A	Front lift assembly	1
16	AOP 6014 A	Spring, front lift	1
17		Grease fitting 1/4" 90°	1
18	AOS 6015 A	Center link	1
19	AOS 6016 A	Frame, lower front	1
20		1" SAE lock nut	1
21	AOS 6017 A	Plate, seat mount	1

## Section 7 THREE-POINT HITCH



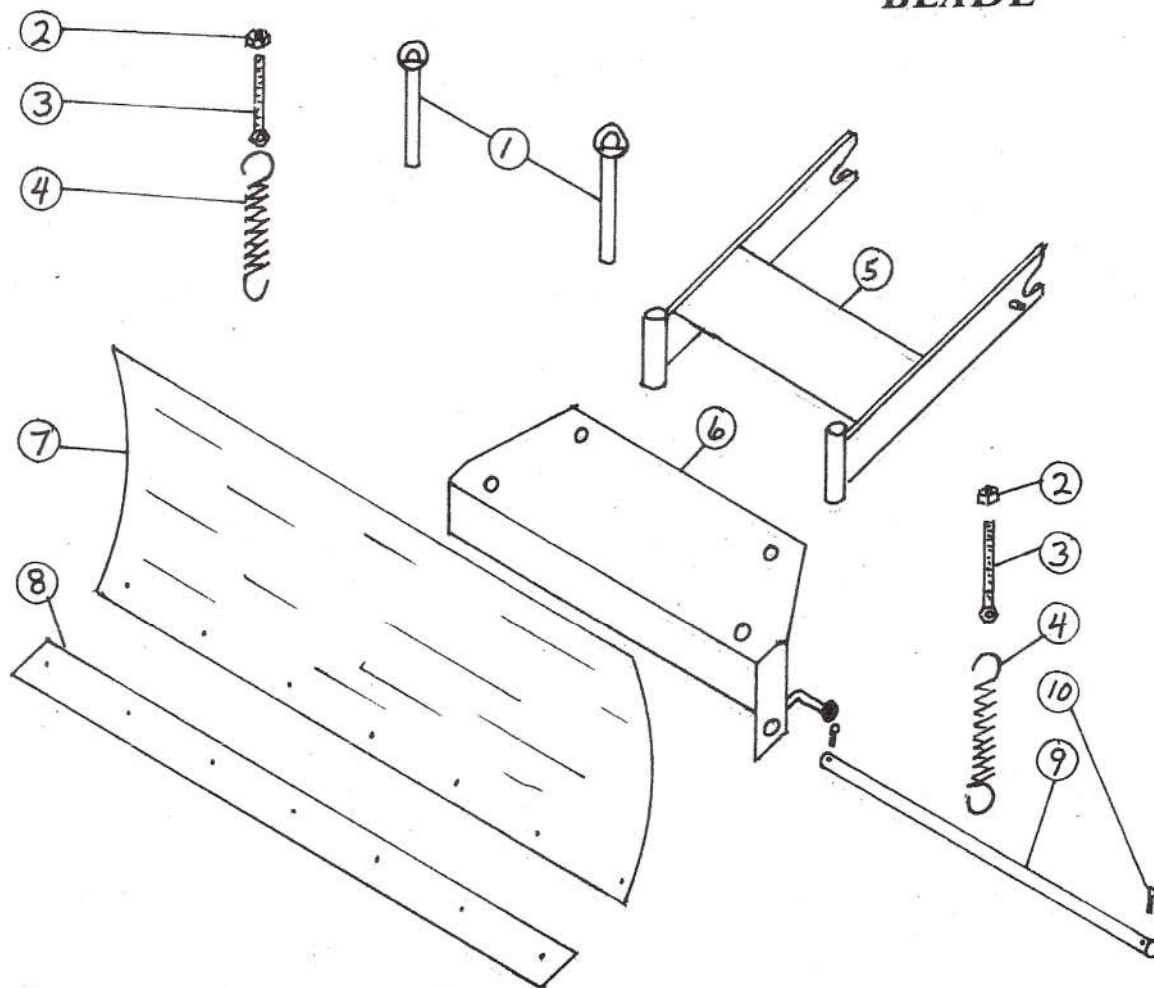
REF.	PART NUMBER	DESCRIPTION	Quan
1		Pin, top link 5/8" x 2"	2
2		Clip Pin 1/8"	2
3	AOP 7001 A	Top link Category O	1
5	AOS 7003 A	Rock shaft assembly	1
6	AOS 7004 A	Link, lift lower	2
7	AOS 7005 A	Draft link	2
8		Chain, anti sway	1

**NOTE: — 3 POINT HITCH BUNDLE** consists of the following in addition to the above.

2	5/8 x 3 bolts	1	3/8 x 1-1/2 bolt
2	5/8" lock nuts	1	AOP 2006 A Cylinder
3	3/8 x 2 bolts	2	Hoses 1/4" x 63"
6	3/8 locknuts	1	Pin 1" x 4-1/4"
4	3/8 x 1 bolts	2	Fittings adaptor 0503-6-6
4	3/8 nuts	2	Fittings 90° 2103-6-6
4	3/8 lock washers		

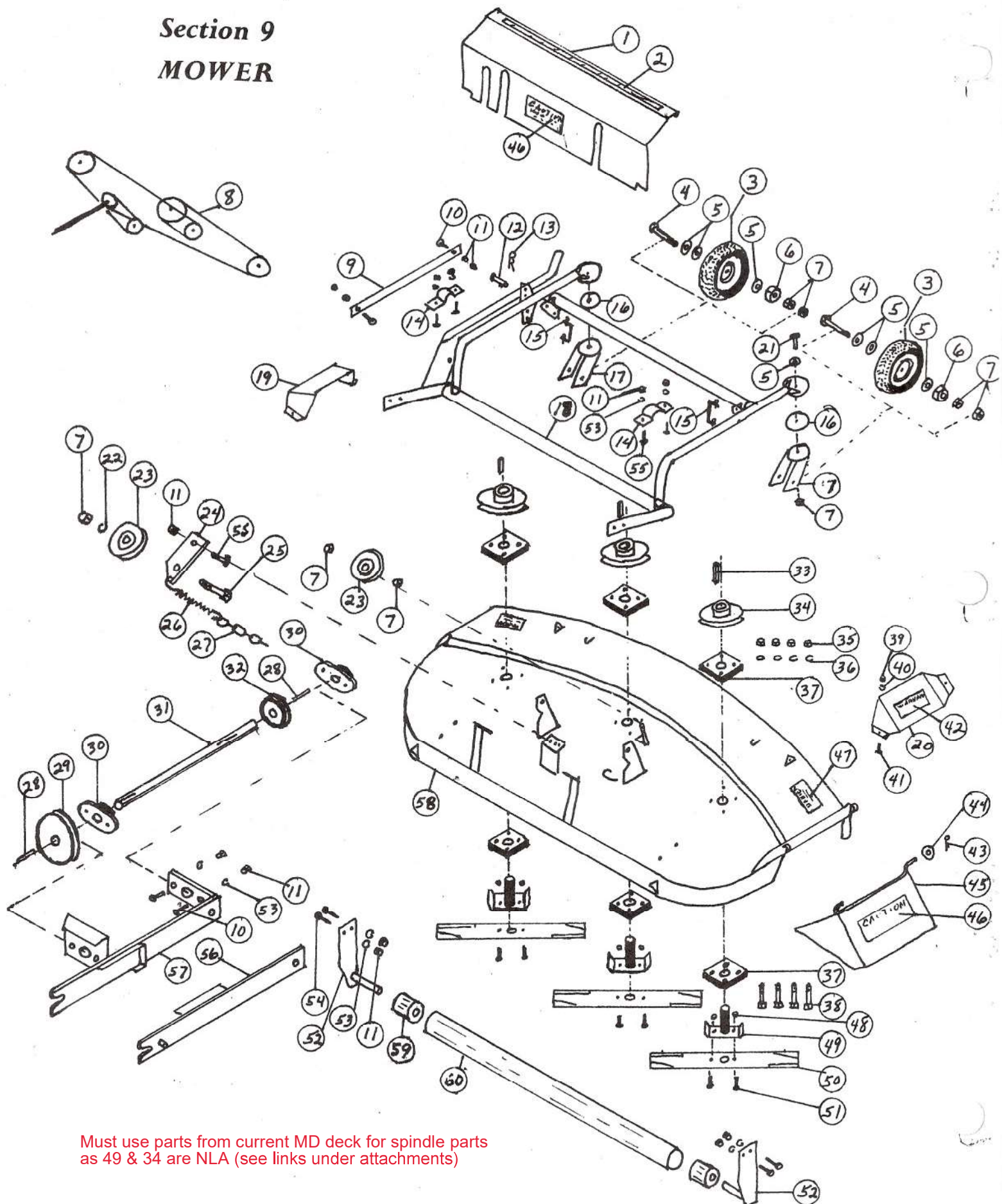


## Section 8 BLADE



REF.	PART NUMBER	DESCRIPTION	Quan
1	AOS 7010 G	Pin	2
2		3/8 nut	2
3	AOS 7011 G	Bolt, spring adjusting	2
4	AOP 7012 G	Spring, trip	2
5	AOS 7013 G	Frame, attaching	1
6	AOS 7014 G	Frame, sub	1
7	AOS 7015 G	Blade	1
8	AOS 7016 G	Cutting edge	1
9	AOS 7017 G	Shaft, pivot	1
10	AOS 7017 G	Cotter pin 3/16 x 1-1/2	2

## Section 9 MOWER



Must use parts from current MD deck for spindle parts  
as 49 & 34 are NLA (see links under attachments)

REF.	PART NUMBER	DESCRIPTION	Quan
1	AOS 6032 M	Shield, upper 48"	1
2	AOS 6033 M	Shield, upper 60"	1
3	AOS 001	Decal, Steiner	1
4	AOP 5008 M	Wheel Caster	2
5		Bolt, 1/2 x 4-1/2	2
6		Washer, flat	8
7		Spacer, 5/8 nut	2
8		Nut, 1/2 "	9
	AOP 8004 M	Belt, drive 48" (A128)	1
	AOP 8005 M	Belt, drive 60" (A144)	1
9	AOS 4057 M	Strap, lift link 48"	1
	AOS 4058 M	Strap, lift link 60"	1
10		Bolt 3/8 x 1-1/2	6
11		Nut 3/8	17
12		Pin clevis 5/16 x 1-1/2	1
13		Clip pin 3/32	1
14	AOS 6034 M	Clamp, frame	2
15	AOS 4059 M	Link, lift	2
16	AOS 5009 M	Washer, tenlon	2
17	AOS 5010 M	Caster	2
18	AOS 6035 M	Frame, upper carrier 48"	1
	AOS 6036 M	Frame, upper carrier 60"	1
19	AOS 6037 M	Shield, left 48"	1
	AOS 6039 M	Shield, left 60"	1
20	AOS 6038 M	Shield, right 48"	1
	AOS 6040 M	Shield, right, 60"	1
21		Bolt - 1/2 x 1-1/2	2
22		Washer, lock 1/2"	1
23	AOP 8006 M	Pulley, idler 4-1/2" - 1/2" bore	2
24	AOS 6041 M	Bracket idler	1
25		Bolt, 1/2 x 2	1
26	AOP 4022 A	Spring	1
27		Chain, 3/16 4-links	1
28		Key, straight - 3/16 x 1	2
29	AOP 8007 M	Pulley, 5" 3/4" bore	1
30		Bearing, 3/4" 2 bolt flange	2
31	AOS 8008 M	Shaft, drive	1
32	AOP 8009 M	Pulley 4" 3/4" bore	1
33		Key straight, 3/16 x 1	3
34	AOP 8010 M	Pulley, 5" - 1" bore - 48"	3
	AOP 8011 M	Pulley, 6" - 1" bore - 60"	3
35		Nut, 7/16 SAE	12
36		Washer lock - 7/16	12
37		Bearing, 4 bolt flange - 1" bore	6
38		Bolt - 7/16 x 2 SAE	12
39		Nut - 1/4"	4
40		Washer lock - 1/4"	4
41		Bolt 1/4 x 3/4	4
42	AOS 004	Decal, warning	1
43		Cotter pin - 1/8" x 1 "	5
44		Washer, flat 3/8	1
45	AOS 6042 M	Chute discharge	1
46	AOS 005	Decal, caution	2
47	AOS 006	Decal, danger	2
48		Nut, 5/16	6
49	AOS 8012 M	Spindle, mower	3
50	AOP 8013 M	Blade mower - 48"	3
	AOP 8014 M	Blade, mower - 60"	3
51	AOP 8015 M	Bolt special	6
52	AOS 6043 M	Support roller left - 48"	1
	AOS 6045 M	Support roller left - 60"	1
	AOS 6044 M	Support roller right - 48"	1
	AOS 6046 M	Support roller right - 60"	1
53		Washer, lock 3/8	12
54		Bolt - 3/8 x 1-1/4"	4
55		Bolt - 3/8 x 1"	5
56	AOS 6048 M	Arm, attaching right	1
57	AOS 6047 M	Arm attaching, left	1
58	AOS 6049 M	Deck - 48"	1
	AOS 6050 M	Deck - 60"	1
59	AOS 8016 M	Bearing, wood, roller	2
60	AOS 8017 M	Roller - 48"	1
	AOS 8018 M	Roller - 60"	1



## ***Steiner Equipment Limited Guarantee***

*On Steiner Equipment, Steiner Corporation guarantees products of its own manufacture to be free from defective material and workmanship for a period of one (1) year, or two-hundred and fifty (250) hours (whichever occurs first), from the date of delivery to the original purchaser.*

**GUARANTEE IS VOID UNLESS GUARANTEE REGISTRATION CARD IS RETURNED TO THE FACTORY WITHIN TEN (10) DAYS FROM THE DATE OF PURCHASE.**

*This guarantee does not apply to any product that has been altered without the manufacturer's authorization, nor to expendable items.*

*Steiner Corporation shall have the option of requiring the return of all parts claimed defective. Such parts shall be returned "transportation charges prepaid." NO parts shall be returned without prior written authorization from Steiner Corporation. We will, at our option, either repair parts or furnish new parts, free of charge, f.o.b. our plant at Orrville, Ohio, for such parts as appear to us to have been defective in workmanship or material. No labor charges will be accepted for warranty work without specific, written approval by Steiner Corporation officials.*

*Equipment and accessories not of our manufacture are guaranteed only to the extent of the original manufacturer's guarantee and subject to their allowance to us, if found defective by them. Steiner Corporation shall in no event be held liable for delay or any other consequential damaged in connection with fulfilling any obligation under this Guarantee.*

**STEINER CORPORATION  
Orrville, Ohio**